



February 10, 2011

RE: Golf Terrace Neighborhood Reconstruction Project

Dear Resident:

On January, 18, 2011, there was a Public Hearing for Golf Terrace Neighborhood Reconstruction Project. The majority of the discussion centered on the water quality of Harvey Lake. The City Council continued the vote on the project until staff could analyze additional options available to reduce pollutant loading to Harvey Lake.

Staff met with the Minnehaha Creek Watershed District (MCWD) and we would like to share the finding of our discussion with you.

We are hosting a neighborhood informational meeting for the on February 22, from 7:00 p.m. to 9:00 p.m., at the new Public Works and Park Maintenance Facility, located at 7450 Metro Boulevard. The meeting will consist of a 20 minute presentation starting shortly after 7:00 pm that will cover potential roadway configurations, storm water treatment options, and additional options which were evaluated at but ruled not feasible.

Potential options include:

Option No. 1 – Narrow Lakeview Drive/Add Swales:

This option would reduce the width of Lakeview Drive, on the northeast side of Harvey Lake, to 18' (back of curb to back of curb) and restrict parking on one side of the street. It would reduce the impervious surface draining to Harvey Lake by an additional 6,295 square feet (SF) or (0.14 Acres) and allow for room to install filtration swales on the south side of Lakeview Drive. These filtration swales would be planted with native plantings and the aesthetics would be similar to a rain garden (see attached map for potential locations).

Option No. 2 – Original Design/Reduction of Impervious Surface:

This option was the original design presented to the City Council on January 18, 2011. Intersections would be realigned and the street would be narrowed to our standard width of 28' (back of curb to back of curb). The redesign of the intersections would reduce impervious surface by approximately 3,192 SF (0.07 Ac).

Option No. 3 – Shoreline Restoration/Buffers around Harvey Lake:

This option should be implemented in conjunction with Option 1 or 2. From aerial photos, the lawns of most of the properties surrounding the lake are mowed to the water edge. All of these properties should install shoreline stabilization and a buffer strip along the shoreline. According to MCWD Wetland Protection Rule, the minimum buffer strip would be 20'. This buffer strip would filter approximately 4 acres of runoff from private property before it drains directly into Harvey Lake. The cost of the lake shore restoration and buffer zone would be the responsibility of the private homeowners (see attached map for locations).

MCWD does have grants which can offset a portion of the construction cost to the homeowner. The homeowners would be responsible for securing these grants and the continued maintenance of the buffer.

There is a potential for homeowners in selected areas to keep the water from their own property from draining to the roadway. If curb and gutter is going to be installed, the City's contractor would need to do minor grading behind the curb to match the existing elevation. Where feasible, the City's contractor could rough grade in a small depression behind the curb. The homeowner could direct the water from their sump pump and roof drains to this area to treat their runoff. MCWD grants may be available to help offset the homeowner's cost of construction.

Other options considered were rain gardens, storm water treatment devices, pervious pavement, and dredging of the lake. These options were analyzed and will be discussed at the meeting regarding why they were determined not to be feasible.

If you cannot attend the informational meeting the presentation can be made available to you after the meeting. Please contact the Engineering Department at 952-826-0371.

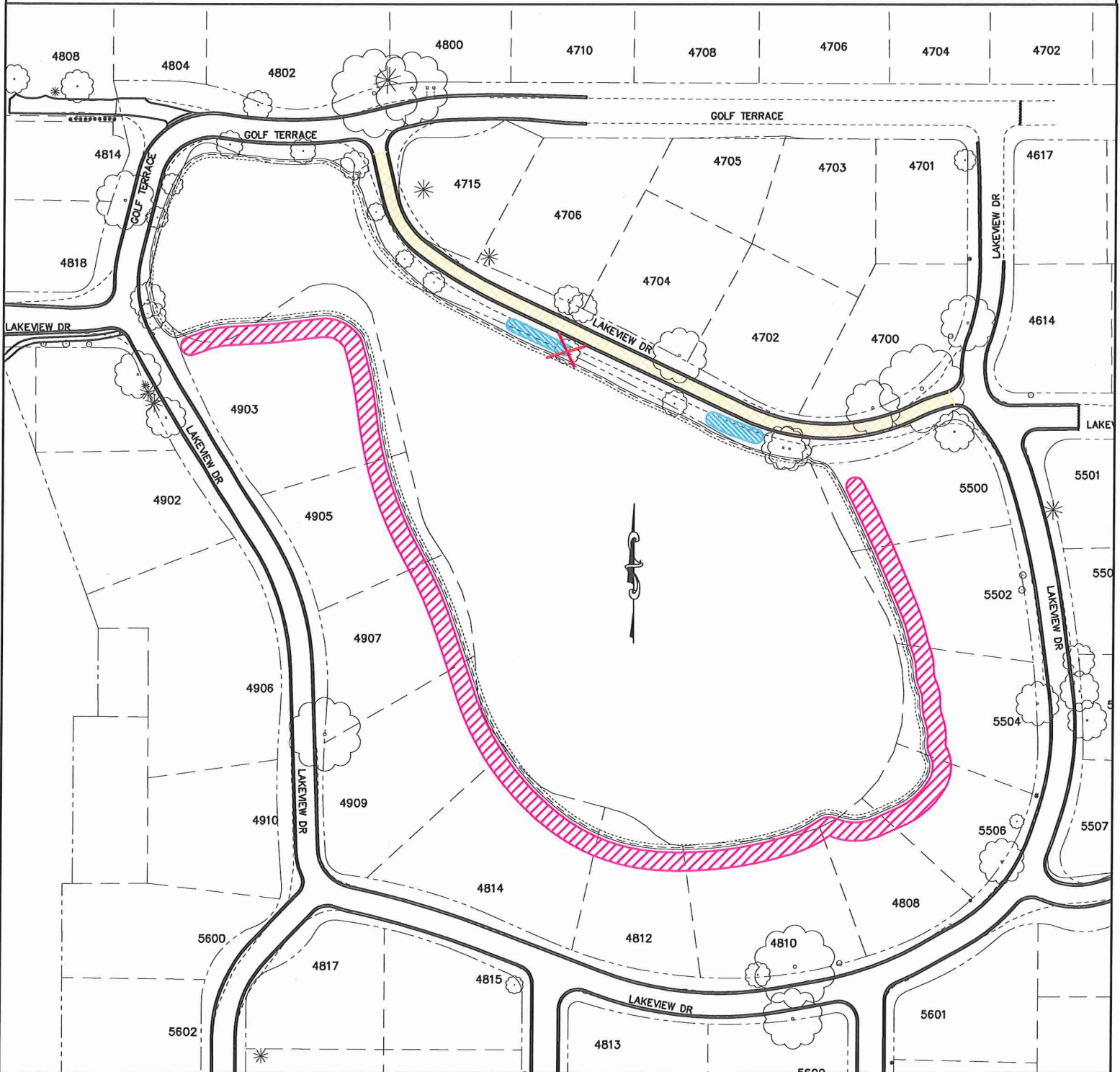
Sincerely,







Jack D. Sullivan, P.E.
Assistant City Engineer

Enclosure: Golf Terrace Neighborhood – Proposed Water Quality Improvements

GOLF TERRACE NEIGHBORHOOD RECONSTRUCTION PROJECT PROPOSED WATER QUALITY IMPROVEMENTS



-  PROPOSED FILTRATION SWALE
-  PROPOSED SHORELINE STABILIZATION & BUFFER STRIP
-  PROPOSED NARROWING OF LAKEVIEW DR. TO 18'
-  PROPOSED TREE REMOVAL