



# Construction Update No. 1

## Minnehaha Woods Neighborhood Roadway Improvements

### City of Edina Contract No. ENG 11-5

April 22, 2011

On April 5 the Edina City Council awarded a contract for the Minnehaha Woods Neighborhood Roadway Improvements Project to Palda and Sons, Inc. (Contractor) of St. Paul, Minnesota. A map showing the two stages of construction is attached with this letter and can be found on the City's website. For your convenience, this update is divided into sections titled Schedule, Pre-Construction Home Condition Surveys, CenterPoint Energy, Parking Impacts to Residents, Private Sanitary Sewer Service Pipe Reconstruction, Trash/Recycling Service, Special Events, Safety, Communications, Emergency Contacts, and Project Contacts.

#### Schedule

The anticipated schedule for this project is:

Pre-construction home condition surveys begin.....	April 25, 2011
CenterPoint Energy completes gas main system upgrades in Stage 1.....	April 27, 2011
CenterPoint Energy begins gas main system upgrades in Stage 2.....	April 28, 2011
Contractor begins street and utility reconstruction.....	May 9, 2011
Final completion of project.....	October 28, 2011
Final assessment hearing .....	Fall 2012

#### Pre-Construction Home Condition Surveys

The Contractor is offering a preconstruction survey for your home and hired an independent testing laboratory, ProjectWorks LLC., to complete the surveys. The purpose of the survey is to establish a baseline (before construction) condition of your home. The survey is a precautionary procedure to document any pre-construction defects present in most homes.

The survey results are to protect you and to allow you expedite any claims for damages which results from construction activities. This program is entirely voluntary and you do not have to participate in the program. Jeff Carlson with ProjectWorks, LLC. will send out a letter with information on how you can schedule a survey for your home.

#### CenterPoint Energy (CPE)

If you have CPE related questions, you can contact Jerry Maleitzke with CPE at 612.366.1787.

### **Parking Impacts to Residents**

Effective May 9, 2011 unless notified otherwise, on-street parking during construction operations (7am-8pm) will not be allowed in Stage 1. All residents in Stage 2 should abide by the City parking ordinance until further notified. Please contact guests and private contractors to inform them of these parking restrictions.

### **Private Sanitary Sewer Service Pipe Reconstruction**

If you choose to replace your sanitary sewer service pipe using your own contractor, the deadlines are as follows:

**Stage 1 – May 15, 2011**

**Stage 2 – July 15, 2011**

### **Trash/Recycling Service**

During construction operations there will likely be a change to the time of day your provider will pick up your trash/recycling. The change of time is unknown at this time, but we will notify you in a future update.

### **Special Events**

Please contact me now if you have special events planned that may require special access to your home during construction activities. Such activities could be graduation parties, garage sales, weddings, medical deliveries, house moves, large home remodeling projects, etc. The Contractor will work with you as best they can to accommodate your event into their construction schedule.

### **Safety**

Please remind your children to stay away from construction sites, construction machinery, and stockpiled materials. These sites, machines, and materials can be dangerous. We do not anticipate school bus stop locations being affected by construction. If construction does temporarily affect their location, you will receive notification. Job site safety is our number one concern.

### **Communications**

One of the tools for communicating with you about this project will be the City Extra e-mail notification service. Updates sent by mail will occur monthly throughout the project. However, the City Extra e-mail notifications occur weekly. The City Extra service is free and allows you to sign up to receive e-mail messages from the City regarding this project.

To sign up for the service go to the City Extra website at <http://cityextra.cityofedina.com>. Only specific information you request will be sent to you. Your subscriptions are protected by your own personal password.

As a supplement to the City Extras you can follow us on Twitter@EdinaMinnWoods. Twitter updates will provide real time updates on construction activities that directly affect your day to day routines.

If you do not already have a Twitter account, you can visit [www.twitter.com/EdinaMinnWoods](http://www.twitter.com/EdinaMinnWoods) and sign up using the following directions:

1. Go to the [www.twitter.com/edinaminnwoods](http://www.twitter.com/edinaminnwoods) website.
2. Click the "Sign Up" button.
3. Enter your Name, create a Username, create a Password and enter your Email then press the "Create my account" button at the bottom.
4. For security purposes, enter the words shown in the pop up box and click Finish.
5. The next three pages are an opportunity to personalize your Twitter account, click the blue "Next Step" button or the blue "Skip Import" button at the bottom of each of those pages to complete the registration process.
6. Twitter will send a confirmation email to you. Confirm your Twitter account by clicking the link within the email.
7. The link will send you back to Twitter.com and your account will be confirmed.

### **Emergency Contacts**

During a life or property-threatening emergency, call 911. If construction equipment or materials need to be moved as part of dealing with the emergency, 911 has a list of emergency contacts for the Contractor.

### **Project Contacts**

Please call me, Carter Schulze at SEH, with your questions and concerns. My telephone number and email address are 612.598.4254 and [cschulze@sehinc.com](mailto:cschulze@sehinc.com). If you get my voice mail when you call, please leave a message. I check my voice mail regularly throughout the day, and even on the weekends.

If I do not have an answer for you, I will route your question or concern to the City, the Contractor, or other SEH staff members. Once I have your answer, I will contact you at my earliest convenience.

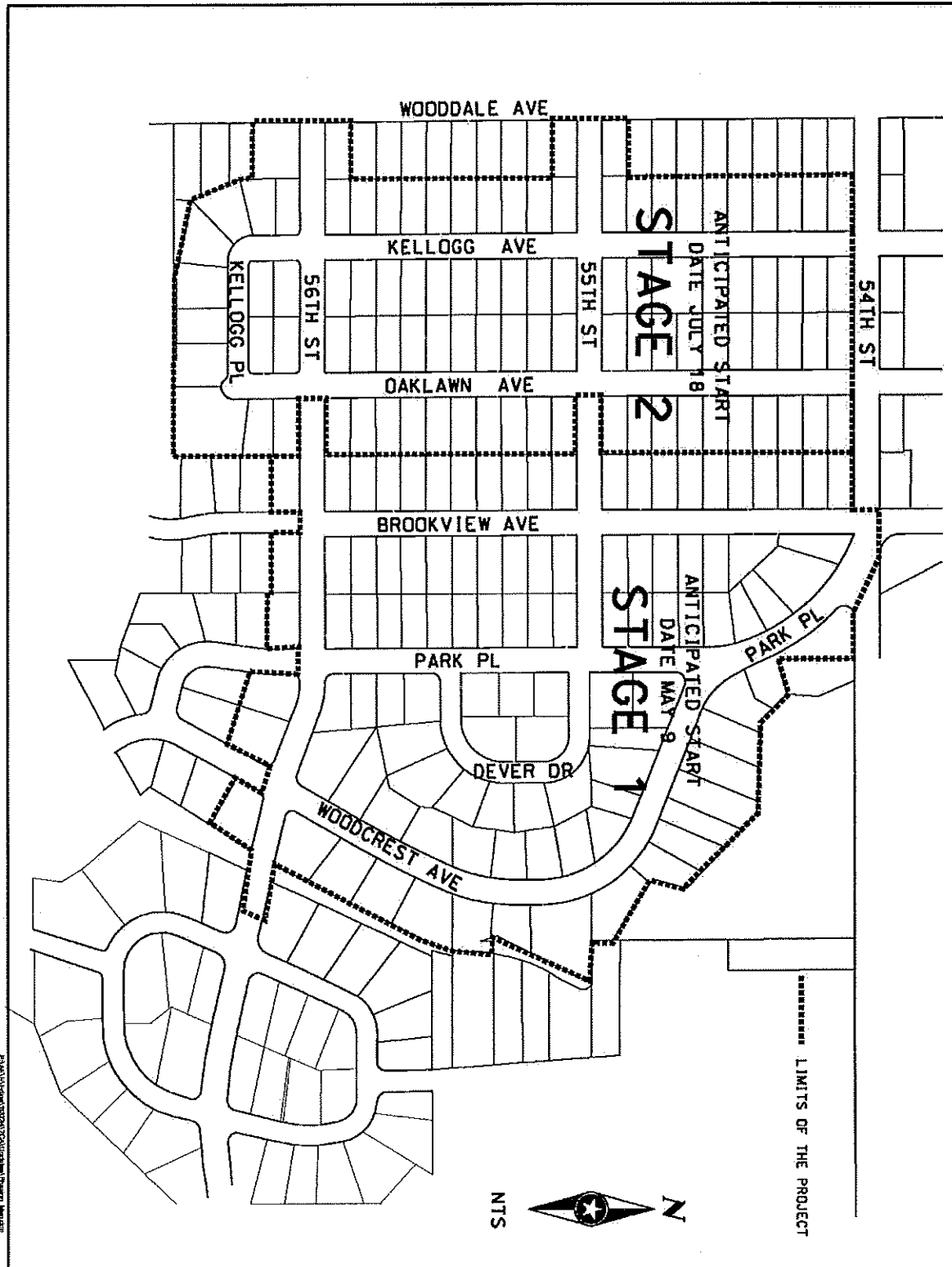
You may also contact the City Engineering Department at 952.826.0371.


Thank you for your patience during this process.

Sincerely



Carter Schulze, SEH  
Project Engineer



 <p>PHONE: (952) 912-2600      10901 RED CIRCLE DR, STE 300      MINNETONKA, MN 55343</p>	<p>PROJECT NO.          EDINA 113734</p>	<p>DATE:          04/21/11</p>	<p>CONSTRUCTION PHASING MAP</p>
--	--	------------------------------------	---------------------------------