



**Date:** February 28, 2008

**To:** Property Owners and Residents of the Country Club Area Sewer, Water and Street Reconstruction Project  
Edina, Minnesota

**From:** City of Edina and Short Elliott Hendrickson Inc. (SEH)

**Reference:** Updated Information – Sanitary Sewer Services

---

Edina staff and SEH wish to clarify details of replacing sanitary sewer services and what is required for the City to consider deducting that portion of the assessment rate devoted to the sanitary sewer service repair.

The overall pending assessments for the project are \$18,210 and \$22,900, depending on the assessment district. The deduct for your sanitary sewer portion of these assessments is estimated at \$6,400 and \$6,000 depending on the assessment district. Please keep in mind that both the overall assessment and proposed deducts are estimates. The final amount for the assessment and deduct will be based on the actual costs and bids to do the project. If the actual costs and bids are lower than the estimated assessments than the final assessments will be reduced; this could include a reduction of the sanitary sewer service deduct. The final assessment amounts will be determined after the project is completed, during the final assessment hearing, which will take place fall of 2010.

The phasing for the proposed project is to reconstruct the area north of Bridge Street in 2008 and the area south of Bridge Street in 2009. Staff will continually share a more detailed schedule that the contractor submits once the project is awarded.

City staff is recommending that property owners upgrade their entire sanitary sewer service from the home to the sanitary sewer main line (located in the roadway). However, we are only requiring that the sanitary sewer service be upgraded from the right-of-way line (property line) to the main line. To be eligible for the sanitary sewer service deduct, this line must be upgraded with a PVC style line prior to the City reconstruction project or if the service has been updated within the last 15-years.

There are many ways a plumber may upgrade a sanitary sewer service; the most common ways are either open cut or slip lining. If you have not upgraded your sanitary sewer service we are recommending that you contact a couple of plumbers to analyze your service; they can video your existing line to determine the best rehabilitation technique. City staff and SEH

Country Club Area Roadway & Utility Project  
February 28, 2008

recently updated the plumbers questionnaire and have also created a more detailed description of the different types of rehabilitation techniques, see attached.

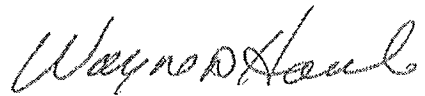
If you need to verify the status or share additional information regarding your sanitary sewer service, please contact Sharon Allison in the City of Edina Engineering Department at 952-826-0449 or at [sallison@ci.edina.mn.us](mailto:sallison@ci.edina.mn.us).

If you have any questions regarding the project please contact:

Chad Millner, PE  
Project Engineer  
SEH Inc.  
952.912.2633  
[cmillner@sehinc.com](mailto:cmillner@sehinc.com)

If you have any other questions please contact me at 952-826-0443 or [whoule@ci.edina.mn.us](mailto:whoule@ci.edina.mn.us)

Sincerely,



Wayne D. Houle, PE  
Director of Public Works / City Engineer



**MEMORANDUM**  
**ENGINEERING DEPARTMENT**  
**CITY OF EDINA**

**DATE:** February 28, 2008

**TO:** Country Club Area Residents

**FROM:** Wayne Houle – Director of Public Works / City Engineer

**SUBJECT:** Status of Country Club Area Sewer, Water, and Street Reconstruction project.

---

In recent weeks, City staff has received a number of emails and phone calls regarding the Country Club Area Sewer, Water, and Street Reconstruction project.

The project was presented to the City Council at a Public Hearing on December 4, 2007. The City Council approved the project at that hearing and authorized staff to complete plans and specifications and take bids for the project.

For more background on the project and its roots in the Northeast Edina Traffic Study, visit:

[http://www.cityofedina.com/Departments/L5\\_ConstructionProjects\\_A213\\_A214.htm](http://www.cityofedina.com/Departments/L5_ConstructionProjects_A213_A214.htm)

[http://www.cityofedina.com/Traffic/L5\\_NEEEdinaTrafficStudy.htm](http://www.cityofedina.com/Traffic/L5_NEEEdinaTrafficStudy.htm)

and

<http://www.cityofedina.com/departments/WatchaMeeting.htm>

Thank you.

# SANITARY SEWER SERVICE PIPE REHABILITATION TECHNIQUES:

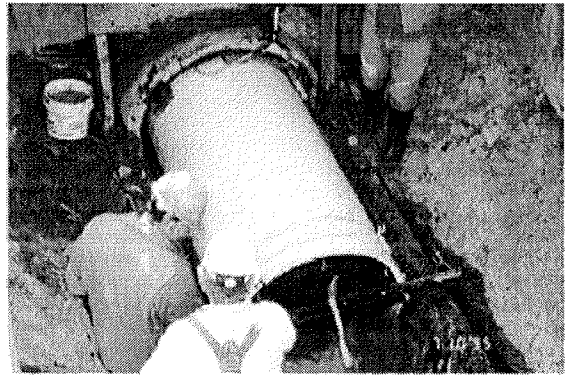
February 26, 2008

## Open Cut:

This method is not recommended around existing trees or other intense landscaping. This method digs a trench to remove and replace the existing pipe. A typical sanitary sewer service is 8 to 12 feet deep; therefore the size of excavation at ground level could be 24 to 36 feet wide.

## Slip Lining Method:

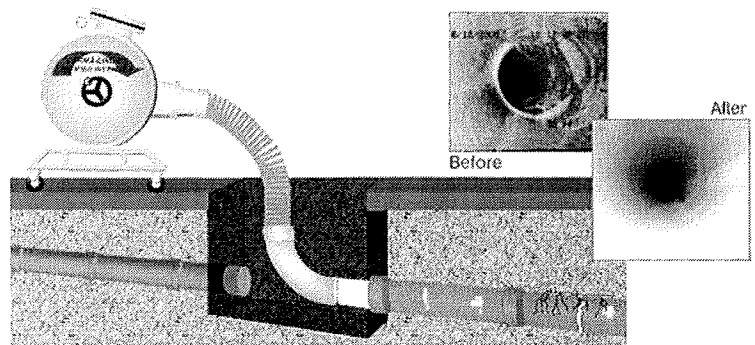
This method is used if you have minimal trees and landscaping. This method allows you to rehabilitate deteriorating pipe by inserting a smaller pipe into an existing pipe. It is done by pushing or pulling lengths of pipe. The pipe is usually plastic. Separated joints, roots or other impediments must be repaired by open cut methods prior to installation. Excavations are needed to get access to the existing service pipe. Locations of these excavations are dependent on the characteristics of each property. Learn more about slip lining by visiting <http://www.oxfordplasticsinc.com/sliplining.htm>.



This shows a larger pipe being slip lined.

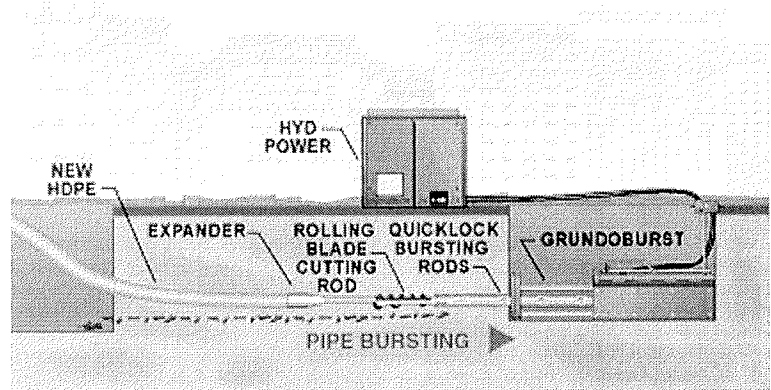
## Cured in Place Pipe Method

This method is used if you have trees and/or intense landscaping. This method inserts a resin-impregnated tube or wetted sock type material into a damaged pipe through a small excavation outside the home or through the sanitary pipe within the home. The sock is filled with hot water or steam and allowed to cure for approximately 2-3 hours. This process results in a "pipe-within-a-pipe". Separated joints, roots or other impediments must be repaired by open cut methods prior to installation. Learn more about cured-in-place pipe lining by visiting [http://www.insituform.com/munsewers/mun\\_1.html](http://www.insituform.com/munsewers/mun_1.html).



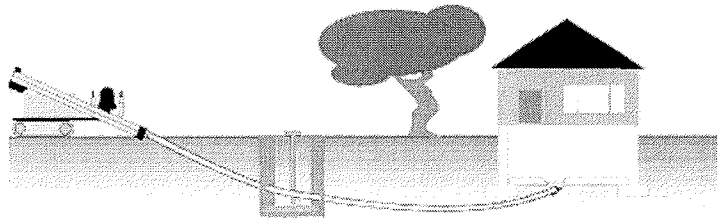
### Pipe Bursting Method

This method is used if you have trees and/or intense landscaping and if your existing pipe is in a highly deteriorated condition. This method pulls a new pipe through an old pipe. The old pipe is shattered as the new pipe is pulled through it, with the pieces of the old pipe displaced into the surrounding soil. Small excavations are needed at each end of the pipe to be burst. Learn more about pipe bursting by visiting [http://www.tttechnologies.com/methods/hyd\\_stat/index.html](http://www.tttechnologies.com/methods/hyd_stat/index.html).



### Directional Drilling Method

This method is used if you need a new pipe and you have trees and/or intense landscaping over the top of the pipe. This method can also allow you to put the new pipe on a different path than your old pipe. Small excavations are needed at each end of the new pipe to be installed. Directional



drilling uses a machine to first drill a hole through the ground along the path of the new pipe. The drill head is steered through the ground by computer sensors located in the drill head. The new pipe is then pushed or pulled into the ground through the drilled hole. Learn more about directional drilling by visiting [http://en.wikipedia.org/wiki/Directional\\_boring](http://en.wikipedia.org/wiki/Directional_boring)



City of Edina  
Country Club Area Sewer, Water, and Street Rehabilitation  
Open House Plumbers Questionnaire Summary  
May 25, 2005

Revisions:  
2/28/08 Updated Information based on 2/15/08 Meeting w/ Plumbers.

**DISCLAIMER:**

The City of Edina does not endorse any contractor listed on this list. The list is being provided to you only as a beginning reference in your search for a contractor. This list was created in 2005 and revised Feb. 2008.

P:\AE\Edina\050301\1\Genl\14\Plumber Quest Revised 2 27 08.xls]Sheet1

Contractor	Private Service Pipe Reconstruction Services	Trenchless Methods for Sanitary Sewer Service Pipe Reconstruction				Trenchless Methods for Water Service Pipe Reconstruction		Contact Information		
		Slip Line Method	Cured in Place Pipe Method	Pipe Bursting Method	Other Trenchless Methods	Directional Drilling Method	Other Trenchless Methods	Contact Name	Day Phone	Email Address
Carl Bolander & Sons Co.	Yes	Yes	No	Yes	Yes - Pilot Tube Pullback	Yes		Jeff Fye	651.224.6299	<a href="mailto:jeffye@bolander.com">jeffye@bolander.com</a>
Gavic & Sons Plumbing	Yes	Yes	Yes	Yes	Yes - Directional Drilling and Pilot Tube Pullback	Yes	Tunneling w/ Pneumatic Gopher. With pipe bursting equipment can pull water service at same time.	Paul Gavic	612.867.9959	<a href="mailto:pgavic@gmail.com">pgavic@gmail.com</a>
Gene's Water & Sewer	Yes	Yes	Yes	Yes	Yes - Drop hole -tunnel	Yes	Drop hole - tunnel	Craig Peterson	612.781.3737	<a href="http://www.geneswaterandsewer.com">www.geneswaterandsewer.com</a>
Highview Plumbing	Yes	Yes	Yes	Yes	Yes Drop hole -tunnel	Yes	Drop hole - tunnel	Dan Swanson	612.916.0444	<a href="mailto:highplmg@aol.com">highplmg@aol.com</a>
Jeche Excavating	Yes	Yes	No	No	No	No	Gopher, Tunnel, Directional Bore	Bob Jeche	612.720.7456	
K's Mechanical	Yes	No	Yes	No	No		NUMA Gopher or Directional Boring	Dave	763.441.8066	
Mpls & Suburban S&W	Yes	Yes	Currently looking into it.	No	Yes - Directional Drilling and Pilot Tube Pullback	Yes	Handtunneling, underground piercing tool (Gopher)	Kevin Hoyhtya	612.861.6076	<a href="mailto:khoyt@aol.com">khoyt@aol.com</a> , <a href="mailto:MSSWINC@aol.com">MSSWINC@aol.com</a>
Mr Rooter	Yes	Yes	Yes	Yes	Yes - Directional Drilling and Pilot Tube Pullback		Horizontal Directional Boring	Jugal	612.328.0383	<a href="mailto:jugal.agarwal@gmail.com">jugal.agarwal@gmail.com</a>
Nova Frost, Inc.	Yes	Yes	No	Yes	Yes - Directional Drilling	Yes	Tunneling	Michael Frost	651.480.8575	<a href="mailto:novafrost@earthlink.net">novafrost@earthlink.net</a>
Olson Construction	Yes	No		No	Yes - Directional Drilling and Pilot Tube Pullback	Yes		Ron Olson	952.448.6674	
P.R.S. Mechanical, Inc.		Yes	Yes	Yes	Yes - Directional Drilling and Pilot Tube Pullback	Yes		Reg Crawford	651.633.6890	<a href="mailto:PRSmeh@hotmail.com">PRSmeh@hotmail.com</a>
Parrott Contracting, Inc.	Yes	Yes	No	No	Yes - Directional Drilling and Pilot Tube Pullback	Yes	Directional Boring	Dave Parrott	507.248.9697	<a href="mailto:dparrott@frontiernet.net">dparrott@frontiernet.net</a>
Plumbing Services, Inc.	Yes	No	No	No	No	No		Mike Nally	763.783.9080	
Ridgedale Plumbing		No						Gary Zwieg	612.817.8776	<a href="mailto:gkmswieg@aol.com">gkmswieg@aol.com</a>
Richfield Plumbing Co.	Yes	Yes	No	No	Yes - Directional Drilling	Yes	Pneumatic Gopher	Bob Adelmann	612.919.1381	<a href="mailto:service@richfieldplumbing.com">service@richfieldplumbing.com</a>
Roto Rooter Services	Yes	Yes	Yes	Yes	Yes - Directional Drilling	Yes	With pipe bursting equipment can pull water service at same time.	David Skallet Blaine Weiss	763.519.3928 763.286.8291	<a href="mailto:David.skallet@rrsc.com">David.skallet@rrsc.com</a>
Sunset Construction Inc.	Yes	Yes		Yes	Yes - Directional drilling, pit launched red pusher, vacuum boring	Yes	Pit launched directional drilling, pit launched red pusher, vacuum boring	Bob Frovarp	612.701.9739 or 763.479.1044	
Thompson Plumbing	Yes	No	No	No	Yes - Directional Drilling	No	Directional Boring	Keith Gause	952.933.7717	<a href="mailto:keith@thompsonplumbing.net">keith@thompsonplumbing.net</a>
Westonka Mechanical	Yes	Yes	Yes	Yes	The yes answers above are done by us and subcontractors.	No		Brian Clark	612.741.9779	



EDINA  
MINNESOTA

COUNTRY CLUB AREA  
SEWER, WATER AND STREET  
RECONSTRUCTION

TYPICAL  
SECTION

FILE NO.  
A-EDINA050301

DATE  
11/28/07

DRAWING  
NO.  
8

**KEYED NOTES:**

- (A) WATER MAIN SERVICE PIPE RECONSTRUCTION BY CITY
- (B) POSSIBLE WATER MAIN SERVICE PIPE RECONSTRUCTION BY RESIDENT
- (C) SANITARY SEWER SERVICE PIPE RECONSTRUCTION BY CITY
- (D) POSSIBLE SANITARY SEWER SERVICE PIPE RECONSTRUCTION BY RESIDENT

SERVICE PIPE OWNED BY RESIDENT

